



# SpeedFace-V3L (Lite)

Linux-Based Access Control & Time and Attendance Terminal with Visible Light Facial Recognition



Facial Recognition



RFID



IP65 Dust & Waterproof Rating



HD Video Door Phone

Compatible With  
 **ZKBio CVSecurity**

Compatible With  
 **BioTime**



(Optional)



GET IT ON  
Google Play



Download on the  
App Store



**SpeedFace-V3L (Lite)** is designed to provide you with a high level of security and convenience.

The Linux-based SpeedFace-V3L (Lite) supports multiple authentication methods including facial recognition, RFID and pin code password. The device also supports different card modules which best suits your needs, for example the 125kHz ID card or 13.56MHz IC card.

Also, SpeedFace-V3L (Lite) complies with IP65 protection rating and the device is waterproof and dustproof.

Besides, SpeedFace-V3L (Lite) has a HD video door phone function that users can access through the ZSmart mobile App and ZKBio Talk (PC), allowing you to monitor and communicate with visitors without constraints.

## Features

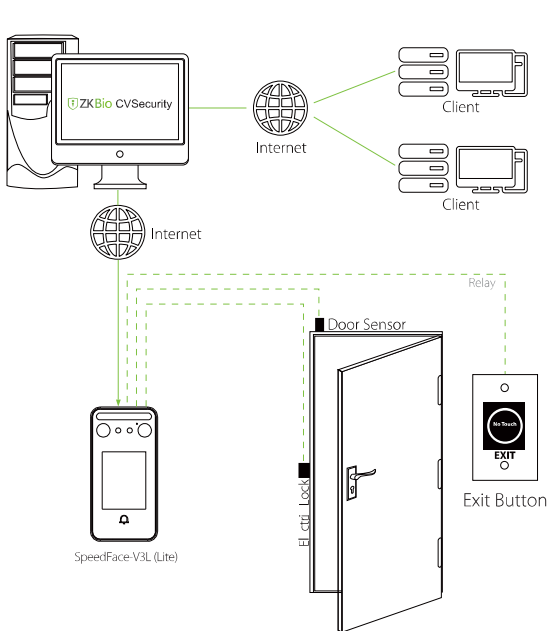
- IP65 waterproof and dustproof
- Multiple authentications: Facial recognition / RFID card / Password
- Available card modules: 125KHz ID card / 13.56MHz IC card
- Hidden supplement light with adjustable brightness
- HD video door phone via ZSmart mobile App & ZKBio Talk (PC) (Coming soon)
- Embedded web server for system configuration
- With high capacity for necessary storage (log events: 200,000 / RFID card: 3,000 / face capacity: 500)

\* HD video door phone function coming soon.

# Specifications

Product Model	SpeedFace-V3L (Lite)
Display	2.4-inch touch Screen
Biometric	Face
RFID	ID Card, IC Card (Optional)
User Capacity	3,000 (Optional: 10,000)
Card Capacity	3,000 (Optional: 10,000)
Face Capacity	500 (1:N) (Optional: 1,500)
Logs Capacity	200,000
Facial Recognition Distance	0.3-1.2m
Facial Recognition Rate	FAR ≤ 0.001%; FRR ≤ 1%
Card Reading Distance	≤ 3cm
Facial Recognition Algorithm	ZKLiveface 3.5
Communication	TCP / IP, Wi-Fi (Optional)
Operation System	Linux
Hardware	1GHz Dual Core CPU; 256MB RAM / 512MB ROM; 1MP Binocular Camera; IEEE 802.11b/g/n 2.4GHz Wi-Fi
Standard Functions	ADMS, DST, Camera, 14-digit User ID, ID Card, Wired doorbell, Record Query, Tamper Switch Alarm, Schedule Bell, T9 Input, Webserver, Multiple Verification Methods, Https
Access Control Interface	3rd Party Electric Lock, Door Sensor, Exit Button
Supported Software	Mobile App: Zsmart (Optional) Software: ZKBio CVSecurity/BioTime
Power Supply	12V 1.5A
Ingress Protection Rating	IP65
Operating Temperature	-5°C~45°C
Operating Humidity	10% - 90%RH
Dimensions(L*W*D)	116.8*58.3*17.0mm
Certifications	ISO 9001, ISO14001, CE, FCC, RoHS

## Configuration



## Dimensions (mm)

